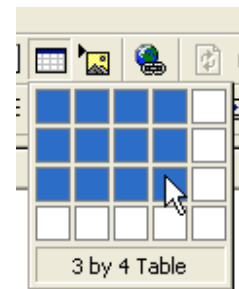


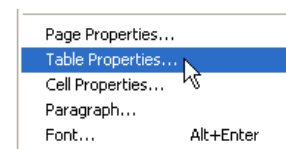
Tables with FrontPage

Tables allow web designers to control the layout of the page as well as the way information is delivered.

When tables are inserted, FrontPage makes them 100% wide. This means that no matter how large the web page is on the Internet, the table will take up the entire width of the page. This type of table is called a **percentage table**.

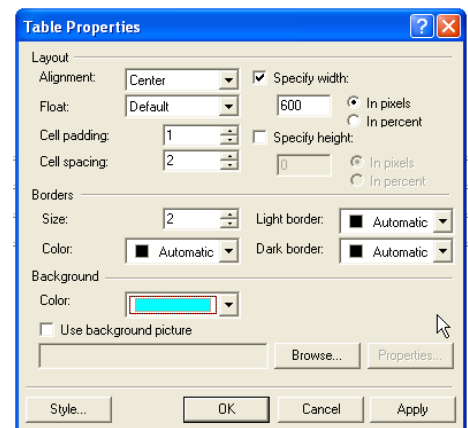


To alter the size of the table, click in one cell of the table and then select **table properties**.



Here is a screenshot of the table properties window.

Since I like **fixed width** tables, I generally assign a **pixel** width to it. You may have to play around with several widths to get the size you want, but it is worth the time to create attractive tables.



Another thing I like to do is align the table in the center of the web page.

Merging Cells

To merge cells in a table, highlight the cells you want to merge and then right click. The option to merge cells will appear.

Inserting an Image into a Cell

To add an image to a cell, simply add the image in the same way you add one to the page.

Using a Background Image

To add a background image to a table, right click and select **cell properties**. You add a background the same way you add a background to a page.